

MCLANE MAGIC



Second Edition October 1, 2023

1.



THIS MONTH IN ELA



LITERATURE, LITERATURE, LITERATURE. IS YOUR CHILD READING AT HOME? IF NOT, ENCOURAGE 30 TO 45 MINUTES OF INDEPENDENT READING AT HOME. THIS CAN BE DONE DURING TRAVEL TIME WHEN STUDENTS ARE IN THE CAR, WHEN A COMMERCIAL AIRS, OR DIRECTLY BEFORE THEIR SCHEDULED BEDTIME. RESEARCH SUPPORTS INDEPENDENT READING AS ONE OF THE BEST INDICATORS OF SCHOOL SUCCESS. OUR SCHOLARS HERE AT MCLANE ARE AMAZING READERS.

MAKE READING AN ACTIVITY THE FAMILY DOES TOGETHER. SUGGESTED PLACES TO TAKE THE FAMILY TO READ ARE THE PARK, THE PUBLIC LIBRARY AND THE BEACH. IT'S NOTHING MORE RELAXING THAN DIVING INTO A GREAT BOOK. (R3.1 FIGURATIVE LANGUAGE) READERS ARE LEADERS. IF YOU NEED MORE INFORMATION ON HOW TO ENCOURAGE READING AT HOME, PLEASE FEEL FREE TO CONTACT MS. CLARK.

P.S. ASK YOUR CHILD ABOUT THE FOCUS STANDARD WE HAVE BEEN WORKING ON R3.1 FIGURATIVE LANGUAGE

MCLANE EVENTS

Online Book Fair
Sept. 24 - Oct. 6th
Check it out!

2.



IT'S SCHOLASTIC
BOOK FAIR
TIME!

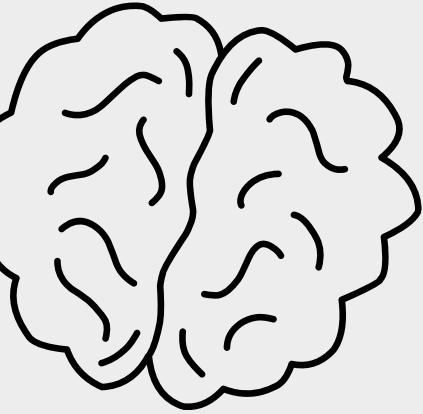
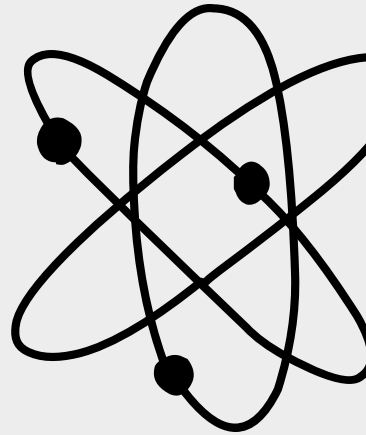
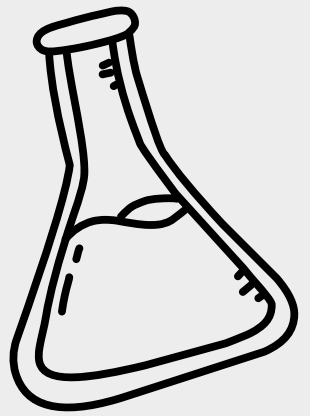


3.

IMPORTANT INFORMATION

MATH HOMEWORK HOTLINE (MHH) OFFERS A FREE SERVICE TO STUDENTS FOR MATH HELP. ON SELECT THURSDAYS, THE LIVE SHOW IS BROADCAST FROM 6 TO 7 P.M. FEATURING A SPECIFIC MATH TOPIC WHILE STUDENTS CALL IN WITH ANY OF THEIR MATH QUESTIONS. THE TUTORS WILL BEGIN TAKING CALLS AT 5:30 P.M. SEE THE SCHEDULE FOR DATES AND TOPICS AVAILABLE.

VIEW LIVE ON THE WEB FROM 6:00 PM-7:00 PM ON THURSDAY EVENINGS OR ON SPECTRUM CHANNEL 635 OR FRONTIER CHANNEL 32. OUR TEACHERS ARE READY TO TAKE YOUR QUESTIONS BEGINNING AT 5:30 PM ON THURSDAY NIGHTS, CALL (813) 840-7260.



4.

UPCOMING FIELD TRIP

Behavior Rewards

- Ice cream Party
October date TBA
- United Skate Party
November- 9th
- Kona Ice
Wednesday during
lunch
- Viking Store Friday
during lunch

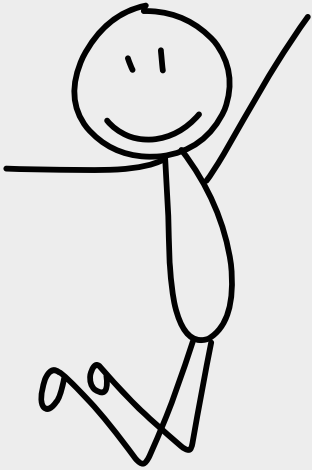


5.

IMPORTANT DATES

OCTOBER 11TH-END OF
GRADING CYCLE

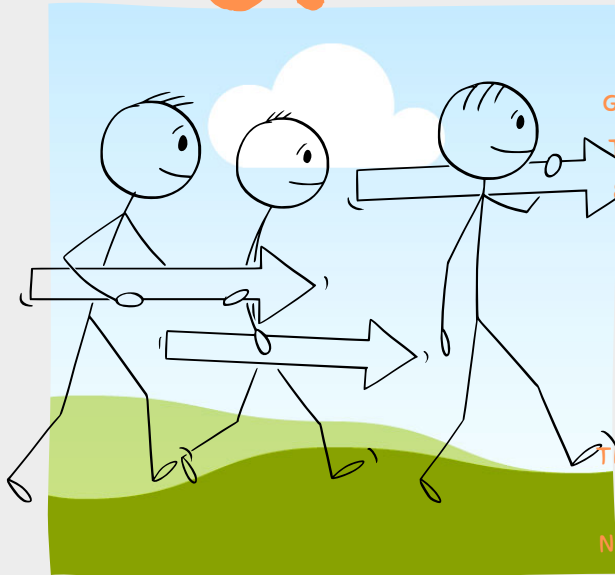
OCTOBER 16TH- NO
SCHOOL



YOUR PARAGRAPH TEXT

REMINDERS!!

6.



STUDENT ABSENT VERIFICATION PROCEDURE

WHEN A STUDENT IS ABSENT FOR ANY REASON, THE PARENT OR GUARDIAN MUST CALL ON OR BEFORE THE DAY(S) OF THE ABSENCE. THE ATTENDANCE LINE FOR MCLANE MIDDLE SCHOOL IS 813-744-8100 (PRESS 1). PLEASE INCLUDE THE FOLLOWING INFORMATION

WHEN CALLING TO REPORT AN ABSENCE FOR YOUR STUDENT:

STUDENT'S COMPLETE NAME (FIRST, MIDDLE & LAST)

DATE(S) OF ABSENCE

REASON FOR ABSENCE

CALLER'S NAME AND RELATION TO STUDENT

THE TELEPHONE NUMBER WHERE THE CALLER CAN BE REACHED FOR VERIFICATION IF NECESSARY.

NOTE: IF NO PHONE CALLS TO EXCUSE THE ABSENCE ARE RECEIVED WITHIN 24 HOURS AFTER THE STUDENT RETURNS TO SCHOOL, THE ABSENCE

READ MORE AT

mclane.middle@hcps.net

PANORAMA SURVEY

YOURTO BETTER SUPPORT STUDENTS' WELLBEING AND ACADEMIC NEEDS OUR DISTRICT WILL BE GATHERING INPUT ON THEIR EXPERIENCES IN SCHOOL. IN OCTOBER STUDENTS IN GRADES 4-12 WILL BE ASKED TO PARTICIPATE IN A SURVEY. THEY WILL ANSWER QUESTIONS ON TOPICS SUCH AS GROWTH MINDSET, SCHOOL CLIMATE, SENSE OF BELONGING, AND TEACHER-STUDENT RELATIONSHIPS.

STUDENTS' RESPONSES WILL PROVIDE INVALUABLE INSIGHT INTO THEIR EXPERIENCES. DISTRICT AND SCHOOL LEADERS WILL USE RESPONSES TO BETTER SUPPORT OUR STUDENTS' NEEDS AT THE DISTRICT AND SCHOOL LEVEL.

IF YOU DO NOT WANT YOUR STUDENT TO PARTICIPATE, PLEASE CONTACT MS. LACKEY
THANK YOU